

# CERTIFICATE OF LOCATION OF GOVERNMENT CORNER

EAST QUARTER Corner of Section 6, Township 105, Range 41, 5TH P.M.

STATE OF MINNESOTA, County of MURRAY

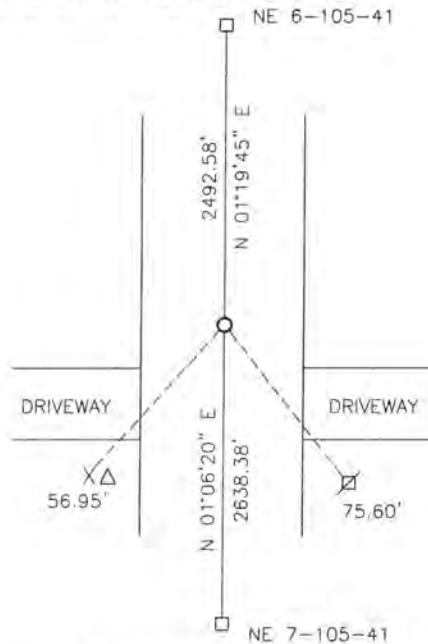
At the corner location shown on the sketch:

On \_\_\_\_\_ found a \_\_\_\_\_

left monument as found,  lowered monument,  removed monument (explain)

On 07-05-2017 placed a 5/8" IRON WITH SEAL #43844

### SKETCH OF REFERENCE TIES



Minnesota State Plane Coordinate System Murray County Datum NAD83 (1996)

N: 129268.659  
E: 490160.576

Nail and bottle cap in utility pole SE 75.60'  
Nail and bottle cap in pedestal guard post SW 56.95'

Statement of evidence relative to this corner location is on back of page.

I hereby certify that this document and the data contained herein was prepared by me or under my direct supervision.

[Signature] 2/20/18  
SIGNATURE DATE

Registration No. 43844

- Land Surveyor,  Professional Engineer
- County Surveyor,  County Engineer

STATE OF MINNESOTA, }  
COUNTY OF MURRAY, } ss.

I hereby certify that the within Instrument was filed in this office for record on the 26<sup>TH</sup> day of MARCH, A.D. 20 18 at 9:00 o'clock A. M., and was duly recorded as Document No. \_\_\_\_\_

[Signature]  
County Recorder

## Statement of Evidence

In 1861, Wellman and Smoot did the original subdivision of the township.

On November 8, 1902, W.J. Woolsteincroft, County Surveyor, recorded distances to the section corners.

On July 5, 2017, Bueltel-Moseng Land Surveying set a 5/8" iron with seal #43844 in the center of the road and using proportionate distances from the measurements Woolsteincroft took in 1902.